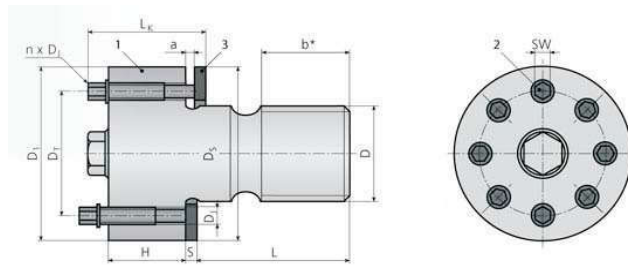


螺栓型

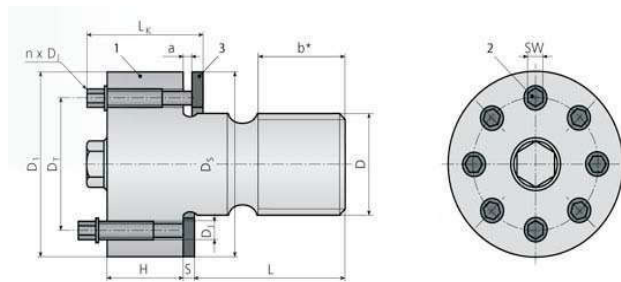
--SB8系列产品规格表



| 型号 | 尺寸 | | | | 螺母 | | | 顶推螺丝 | | | | 垫圈 | | 总高度 | 预紧力 | | 扭矩 | |
|--------------------|------|-----|-----|-----|------|----|-----|----------|----|------|------|-----|------|------|------|------|-----|-----|
| | 螺纹 | 节距 | | | | | | | | | | | | | D1 | H | DT | DJ |
| | | D | P1 | P2 | P3 | F1 | F2 | M1 | M2 | | | | | | | | | |
| | [mm] | | | | [mm] | | | [mm] | | [mm] | [mm] | | [mm] | [kN] | | [Nm] | | |
| SB8-M16x...x.../W | M16 | 2.0 | 1.5 | 1.0 | 31 | 18 | 22 | M6x0.75 | 4 | 5 | 4 | 30 | 3 | 32 | 73 | 94 | 14 | 18 |
| SB8-M20x...x.../W | M20 | 2.5 | 1.5 | 1.0 | 35 | 18 | 26 | M6x0.75 | 6 | 5 | 4 | 35 | 4 | 33 | 109 | 140 | 14 | 18 |
| SB8-M24x...x.../W | M24 | 3.0 | 2.0 | 1.5 | 41 | 18 | 30 | M6x0.75 | 8 | 5 | 4 | 41 | 4 | 33 | 146 | 187 | 14 | 18 |
| SB8-M27x...x.../W | M27 | 3.0 | 2.0 | 1.5 | 45 | 23 | 35 | M8x1 | 6 | 6 | 7 | 45 | 5 | 45 | 190 | 250 | 32 | 42 |
| SB8-M30x...x.../W | M30 | 3.5 | 2.0 | 1.5 | 50 | 23 | 38 | M8x1 | 6 | 6 | 7 | 50 | 5 | 45 | 214 | 286 | 36 | 48 |
| SB8-M33x...x.../W | M33 | 3.5 | 2.0 | 1.5 | 57 | 28 | 43 | M10x1.25 | 6 | 8 | 7 | 57 | 5 | 52 | 285 | 380 | 60 | 80 |
| SB8-M36x...x.../W | M36 | 4.0 | 3.0 | 1.5 | 60 | 28 | 46 | M10x1.25 | 6 | 8 | 7 | 60 | 5 | 52 | 333 | 443 | 70 | 93 |
| SB8-M39x...x.../W | M39 | 4.0 | 3.0 | 1.5 | 63 | 28 | 49 | M10x1.25 | 8 | 8 | 7 | 63 | 5 | 52 | 406 | 540 | 64 | 85 |
| SB8-M42x...x.../W | M42 | 4.5 | 3.0 | 1.5 | 66 | 28 | 52 | M10x1.25 | 8 | 8 | 7 | 66 | 5 | 52 | 457 | 610 | 72 | 96 |
| SB8-M45x...x.../W | M45 | 4.5 | 3.0 | 1.5 | 75 | 37 | 57 | M12x1.25 | 8 | 10 | 7 | 75 | 6 | 64 | 535 | 720 | 100 | 135 |
| SB8-M48x...x.../W | M48 | 5.0 | 3.0 | 1.5 | 78 | 37 | 60 | M12x1.25 | 8 | 10 | 7 | 78 | 6 | 64 | 605 | 800 | 113 | 150 |
| SB8-M52x...x.../W | M52 | 5.0 | 3.0 | 2.0 | 82 | 37 | 64 | M12x1.25 | 10 | 10 | 7 | 82 | 6 | 64 | 735 | 970 | 110 | 145 |
| SB8-M56x...x.../W | M56 | 5.5 | 4.0 | 2.0 | 86 | 37 | 68 | M12x1.25 | 10 | 10 | 7 | 86 | 6 | 64 | 835 | 1120 | 125 | 167 |
| SB8-M60x...x.../W | M60 | 5.5 | 4.0 | 2.0 | 90 | 37 | 72 | M12x1.25 | 12 | 10 | 7 | 90 | 6 | 64 | 985 | 1310 | 123 | 163 |
| SB8-M64x...x.../W | M64 | 6.0 | 4.0 | 2.0 | 103 | 46 | 80 | M16x1.5 | 8 | 14 | 10 | 103 | 8 | 83 | 950 | 1270 | 235 | 315 |
| SB8-M68x...x.../W | M68 | 6.0 | 4.0 | 2.0 | 107 | 46 | 84 | M16x1.5 | 8 | 14 | 10 | 107 | 8 | 83 | 1090 | 1450 | 270 | 360 |
| SB8-M72x...x.../W | M72 | 6.0 | 4.0 | 2.0 | 111 | 46 | 88 | M16x1.5 | 10 | 14 | 10 | 111 | 8 | 83 | 1230 | 1640 | 245 | 325 |
| SB8-M76x...x.../W | M76 | 6.0 | 4.0 | 2.0 | 116 | 46 | 92 | M16x1.5 | 12 | 14 | 10 | 116 | 8 | 83 | 1390 | 1870 | 230 | 310 |
| SB8-M80x...x.../W | M80 | 6.0 | 4.0 | 2.0 | 120 | 56 | 96 | M16x1.5 | 12 | 14 | 9 | 120 | 8 | 92 | 1570 | 2080 | 260 | 345 |
| SB8-M90x...x.../W | M90 | 6.0 | 4.0 | 2.0 | 130 | 56 | 106 | M16x1.5 | 16 | 14 | 9 | 130 | 8 | 92 | 2010 | 2700 | 250 | 335 |
| SB8-M100x...x.../W | M100 | 6.0 | 4.0 | 2.0 | 148 | 60 | 120 | M20x1.5 | 12 | 17 | 10 | 148 | 10 | 99 | 2540 | 3370 | 520 | 690 |
| SB8-M110x...x.../W | M110 | 6.0 | 4.0 | 2.0 | 158 | 60 | 130 | M20x1.5 | 14 | 17 | 10 | 158 | 10 | 99 | 2850 | 3750 | 500 | 660 |
| SB8-M120x...x.../W | M120 | 6.0 | 4.0 | 2.0 | 170 | 64 | 140 | M20x1.5 | 16 | 17 | 12 | 170 | 10 | 105 | 3380 | 4500 | 520 | 690 |
| SB8-M125x...x.../W | M125 | 6.0 | 4.0 | 2.0 | 175 | 64 | 145 | M20x1.5 | 16 | 17 | 12 | 175 | 10 | 105 | 3650 | 4880 | 560 | 750 |
| SB8-M130x...x.../W | M130 | 6.0 | 4.0 | 2.0 | 180 | 76 | 150 | M20x1.5 | 18 | 17 | 12 | 180 | 10 | 118 | 3950 | 5270 | 540 | 720 |
| SB8-M140x...x.../W | M140 | 6.0 | 4.0 | 2.0 | 190 | 76 | 160 | M20x1.5 | 20 | 17 | 12 | 190 | 10 | 118 | 4550 | 6100 | 560 | 750 |
| SB8-M150x...x.../W | M150 | 6.0 | 4.0 | 2.0 | 200 | 76 | 170 | M20x1.5 | 20 | 17 | 12 | 200 | 10 | 118 | 4880 | 6500 | 600 | 800 |
| SB8-M160x...x.../W | M160 | 6.0 | 4.0 | - | 210 | 76 | 180 | M20x1.5 | 20 | 17 | 12 | 210 | 10 | 118 | 5280 | 7000 | 650 | 860 |

螺栓型

--SB12系列产品规格表



| 型号 | 尺寸 | | | | 螺母 | | | 顶推螺丝 | | | | 垫圈 | | 总高度 | 预紧力 | | 扭矩 | |
|--------------------|------|-----|-----|-----|------|----|-----|----------|----|------|----|------|----|------|------|------|-----|-----|
| | 螺纹 | 节距 | | | | | | | | | | | | | D1 | H | DT | DJ |
| | | D | P1 | P2 | P3 | F1 | F2 | M1 | M2 | | | | | | | | | |
| | [mm] | | | | [mm] | | | [mm] | | [mm] | | [mm] | | [kN] | | [Nm] | | |
| SB12-M20x...x.../W | M20 | 2.5 | 1.5 | 1.0 | 35 | 18 | 26 | M6x0.75 | 8 | 5 | 4 | 35 | 4 | 33 | 146 | 187 | 14 | 18 |
| SB12-M24x...x.../W | M24 | 3.0 | 2.0 | 1.5 | 43 | 24 | 32 | M8x1 | 6 | 6 | 6 | 43 | 4 | 44 | 202 | 268 | 34 | 45 |
| SB12-M27x...x.../W | M27 | 3.0 | 2.0 | 1.5 | 47 | 24 | 35 | M8x1 | 8 | 6 | 6 | 47 | 5 | 45 | 270 | 357 | 34 | 45 |
| SB12-M30x...x.../W | M30 | 3.5 | 2.0 | 1.5 | 50 | 24 | 38 | M8x1 | 10 | 6 | 6 | 50 | 5 | 45 | 317 | 427 | 32 | 43 |
| SB12-M33x...x.../W | M33 | 3.5 | 2.0 | 1.5 | 57 | 28 | 43 | M10x1.25 | 8 | 8 | 7 | 57 | 5 | 52 | 406 | 539 | 64 | 85 |
| SB12-M36x...x.../W | M36 | 4.0 | 3.0 | 1.5 | 60 | 28 | 46 | M10x1.25 | 10 | 8 | 7 | 60 | 5 | 52 | 508 | 675 | 64 | 85 |
| SB12-M39x...x.../W | M39 | 4.0 | 3.0 | 1.5 | 63 | 28 | 49 | M10x1.25 | 12 | 8 | 7 | 63 | 5 | 52 | 570 | 760 | 60 | 80 |
| SB12-M42x...x.../W | M42 | 4.5 | 3.0 | 1.5 | 66 | 28 | 52 | M10x1.25 | 12 | 8 | 7 | 66 | 5 | 52 | 645 | 855 | 68 | 90 |
| SB12-M45x...x.../W | M45 | 4.5 | 3.0 | 1.5 | 75 | 37 | 57 | M12x1.25 | 10 | 10 | 7 | 75 | 6 | 64 | 760 | 1020 | 114 | 152 |
| SB12-M48x...x.../W | M48 | 5.0 | 3.0 | 1.5 | 78 | 37 | 60 | M12x1.25 | 10 | 10 | 7 | 78 | 6 | 64 | 855 | 1140 | 128 | 170 |
| SB12-M52x...x.../W | M52 | 5.0 | 3.0 | 2.0 | 82 | 37 | 64 | M12x1.25 | 12 | 10 | 7 | 82 | 6 | 64 | 995 | 1320 | 124 | 165 |
| SB12-M56x...x.../W | M56 | 5.5 | 4.0 | 2.0 | 86 | 37 | 68 | M12x1.25 | 12 | 10 | 7 | 86 | 6 | 64 | 995 | 1320 | 124 | 165 |
| SB12-M60x...x.../W | M60 | 5.5 | 4.0 | 2.0 | 90 | 37 | 72 | M12x1.25 | 14 | 10 | 7 | 90 | 6 | 64 | 1160 | 1540 | 124 | 165 |
| SB12-M64x...x.../W | M64 | 6.0 | 4.0 | 2.0 | 103 | 46 | 80 | M16x1.5 | 10 | 14 | 10 | 103 | 8 | 83 | 1310 | 1740 | 260 | 345 |
| SB12-M68x...x.../W | M68 | 6.0 | 4.0 | 2.0 | 107 | 46 | 84 | M16x1.5 | 10 | 14 | 10 | 107 | 8 | 83 | 1480 | 1990 | 295 | 395 |
| SB12-M72x...x.../W | M72 | 6.0 | 4.0 | 2.0 | 111 | 56 | 88 | M16x1.5 | 12 | 14 | 9 | 111 | 8 | 92 | 1690 | 2260 | 280 | 375 |
| SB12-M76x...x.../W | M76 | 6.0 | 4.0 | 2.0 | 116 | 56 | 92 | M16x1.5 | 14 | 14 | 9 | 116 | 8 | 92 | 1900 | 2540 | 270 | 360 |
| SB12-M80x...x.../W | M80 | 6.0 | 4.0 | 2.0 | 120 | 56 | 96 | M16x1.5 | 14 | 14 | 9 | 120 | 8 | 92 | 2110 | 2820 | 300 | 400 |
| SB12-M90x...x.../W | M90 | 6.0 | 4.0 | 2.0 | 139 | 61 | 110 | M20x1.5 | 12 | 17 | 9 | 139 | 10 | 99 | 2740 | 3660 | 560 | 750 |